

CWA's - in relations to the Nord Stream Project

Samira Kiefer Andersson
Helsinki, September 2012

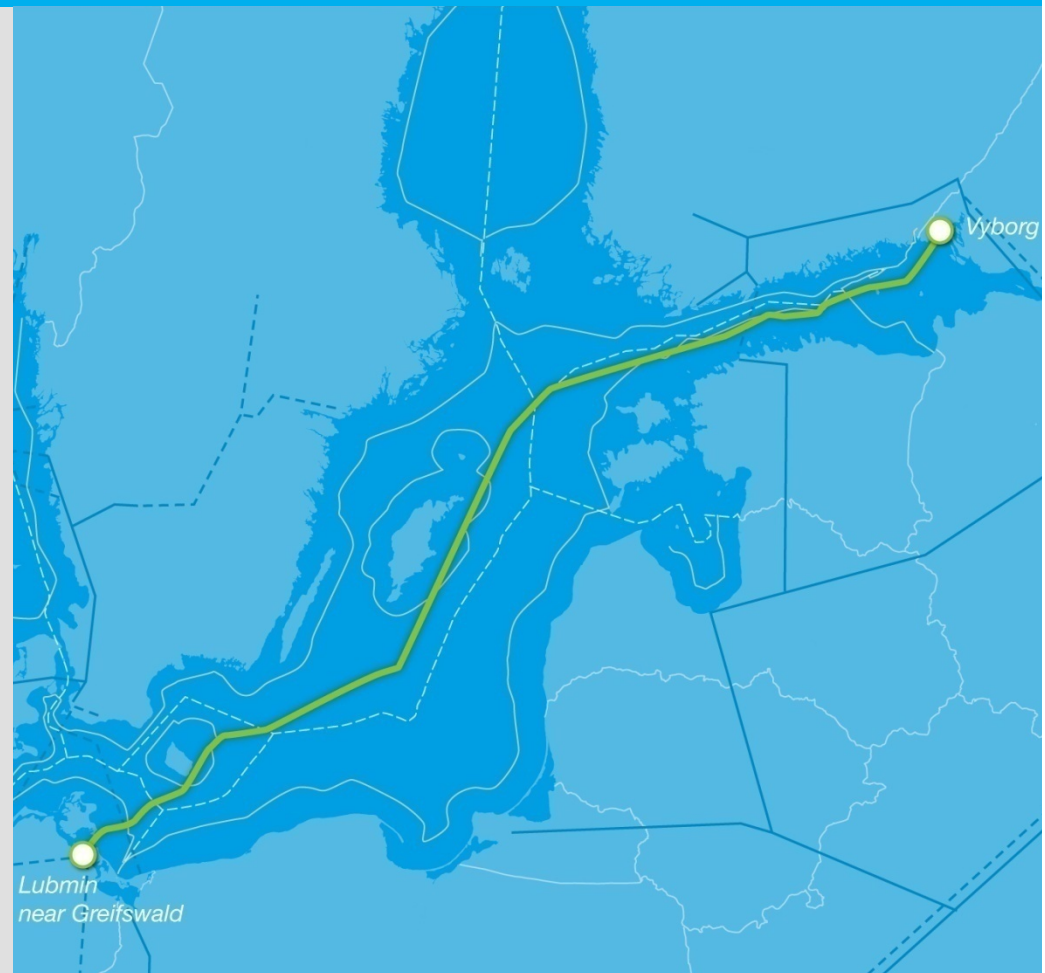
Energy infrastructure for Europe >

Nord Stream

- > Two parallel offshore pipelines of 1,224 km (transport capacity 55 bcm per year)
- > A direct and fixed link between Russia's vast proven gas reserves and the European Union
- > An additional route complementing existing network and other planned pipelines
- > Infrastructure project 'of European interest' within the framework of the EU's TEN-E guidelines

Gas transported by Nord Stream can

- > Provide 26 million European households with electricity and heating fuel
- > Make a substantial contribution to EU climate protection goals
- > Reach consumers already in the last quarter of 2011



Committed to preserving the environment >

Nord Stream:

- > Invested 100 million euros into environmental studies, planning and route design
- > Devoted 40 million euros to a comprehensive environmental monitoring programme
- > Surveyed 40,000 line kilometres of the Baltic Sea in comprehensive geophysical investigations
- > Concluded comprehensive EIAs and environmental studies
- > Successfully cleared over 100 munitions for safe routing
- > Preserved cultural heritage and identified 100 wrecks in the pipeline corridor
- > Will share the findings with scientists and others working on preserving and improving the Baltic Sea



Munitions identified along the route >

- > 3,000 objects of different nature detected
- > 2,000 objects visually analysed
- > Over 100 munitions successfully cleared:
 - 49 in the Finnish EEZ
 - 7 in the Swedish EEZ
 - 49 in Russian waters
 - 2 explosive items in German waters
- > Seven chemical munitions found, will be left on the seabed, pose no risk to the pipeline and the environment
- > Analysis of 100 additional soil samples show no chemical contamination of the seabed

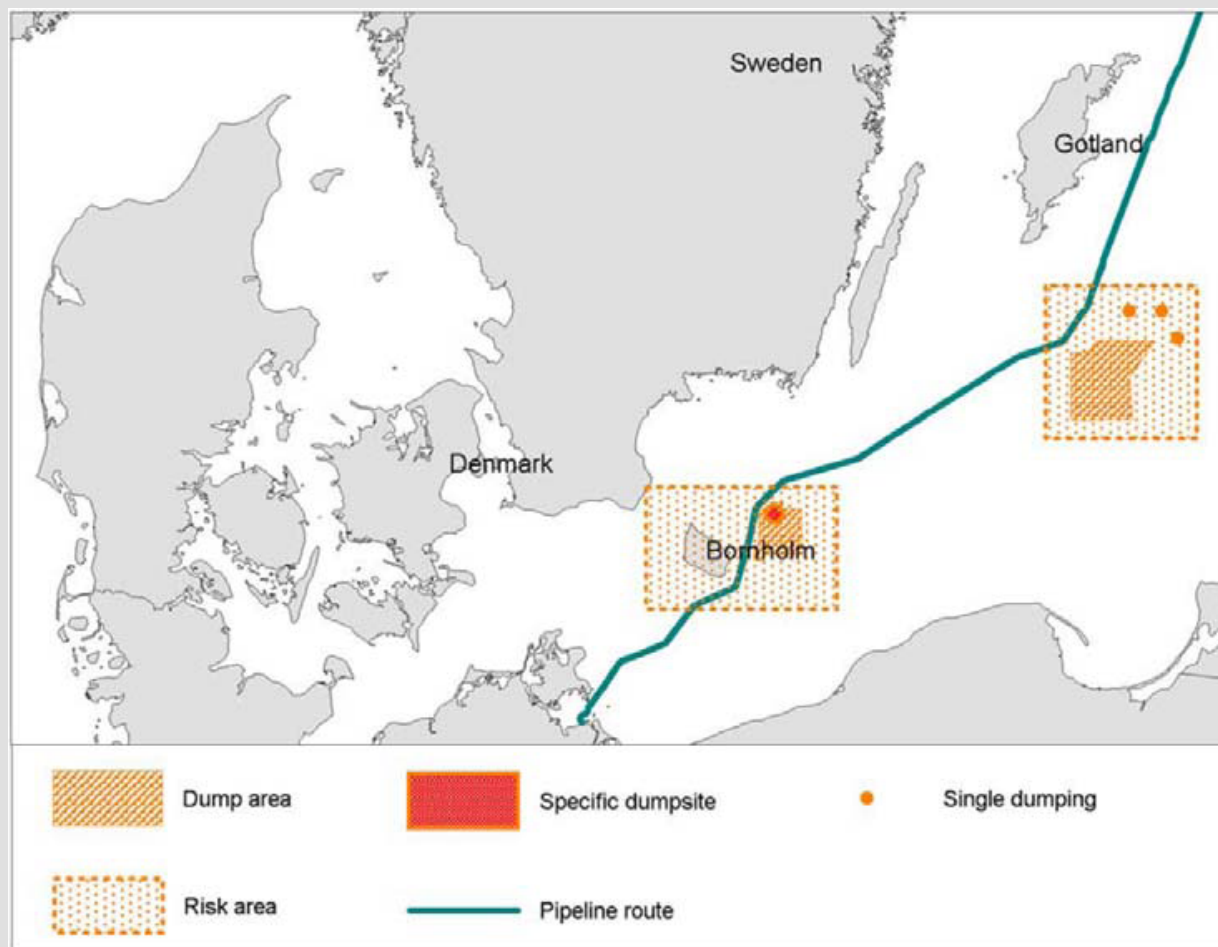


Nord Stream Pipelines: Route and elevated risk areas

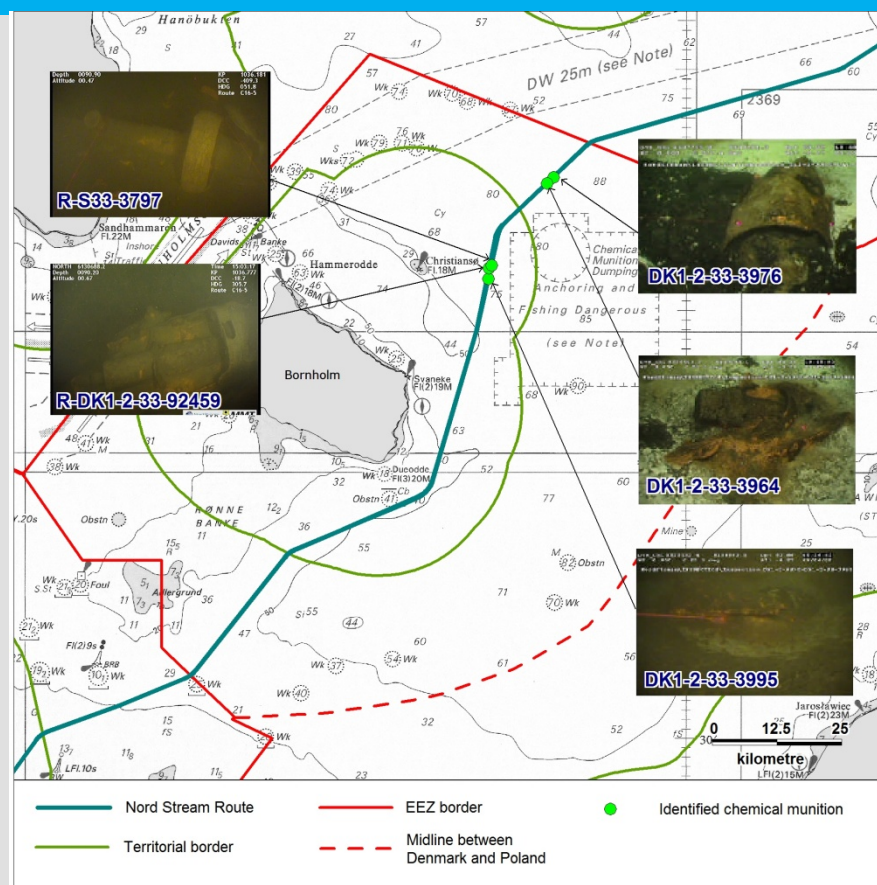
The pipeline route runs through two areas with elevated risk levels for chemical contamination - as classified by Helcom:

- East of Bornholm
- South-east of Gotland

For these areas, procedures (esp. for fishermen) are in place.

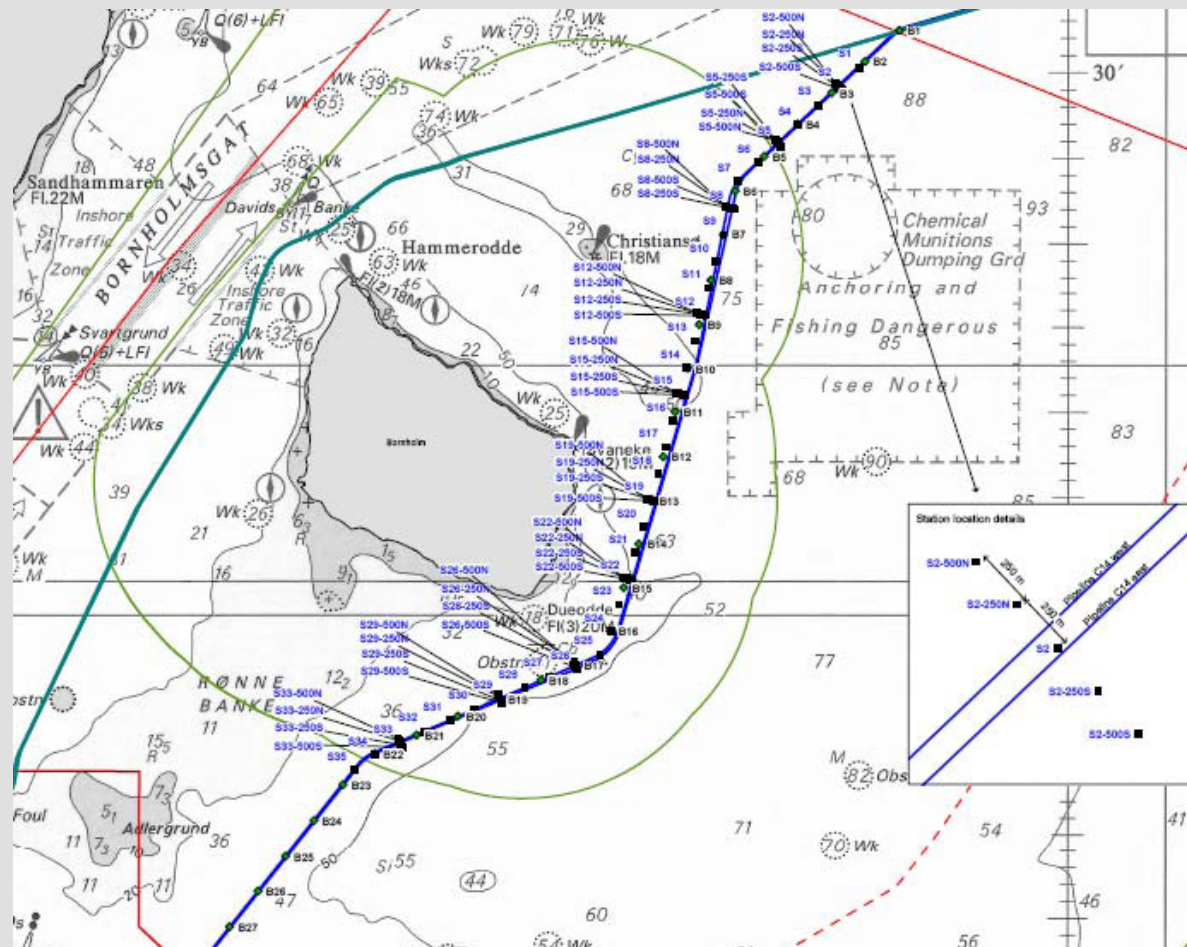


Chemical munitions finds



- > During pre-lay survey activities, two additional chemical munitions were identified east of Bornholm. Both finds constitute German Mustard Gas Bombs.

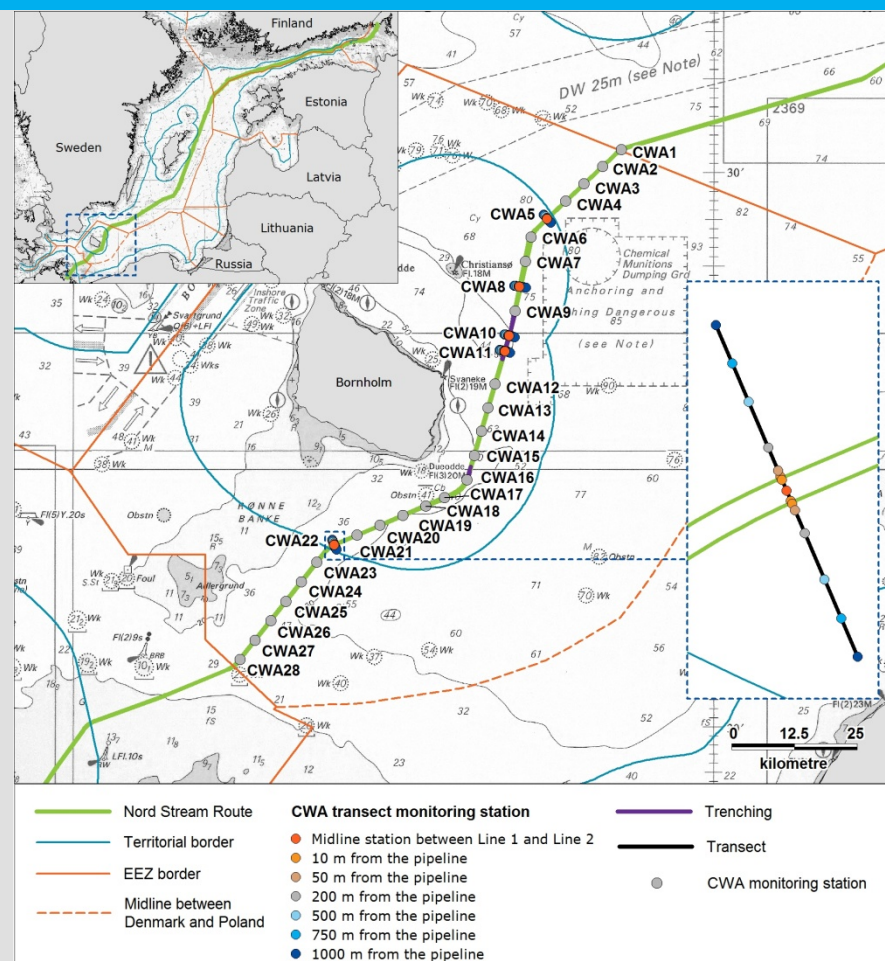
Environmental Sampling Survey - Baseline



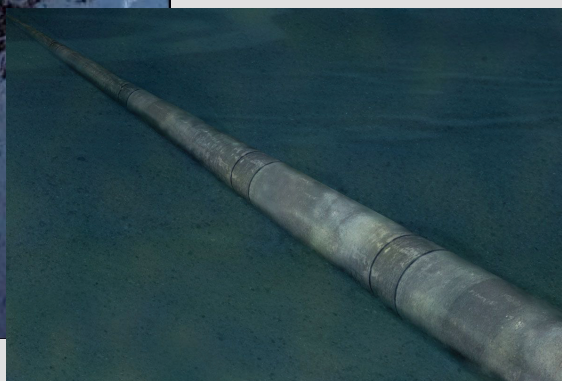
Environmental Sampling Survey – Results 2010-2011

The conclusions relative to exposure for both 2010 and 2011 is:

- > That no parent CWA was found.
- > That the exposure concentrations are predicted not to represent a risk towards the fish community; compared to the 2008 data and 2010 data.
- > No conclusions can be made regarding increasing concentration gradients along transects towards the former dumpsite.
- > The added risk from pipelay activities is less than 1 % of the background CWA related risk in the area.



Assistance from the Admiral Danish Fleet



Activities applicable in Denmark

Cable Crossings

Pipelay

Ploughing

Rock Placement

Abandonment and Recovery

Data and Information Fund – Nord Stream shares knowledge of Baltic Sea studies >

- > Nord Stream will establish a Data and Information Fund to:
 - Share extensive knowledge and survey data
 - Compile and convert data into usable information that is needed to conduct projects within the HELCOM's Baltic Sea Action Plan (BSAP)
- > Introduction of the Fund at the Baltic Sea Action Summit in Helsinki in February 2010
- > 2012-2013: Set-up database infrastructure and data filing with pre-construction survey data and environmental monitoring information
- > Nord Stream to maintain database until 2021

